

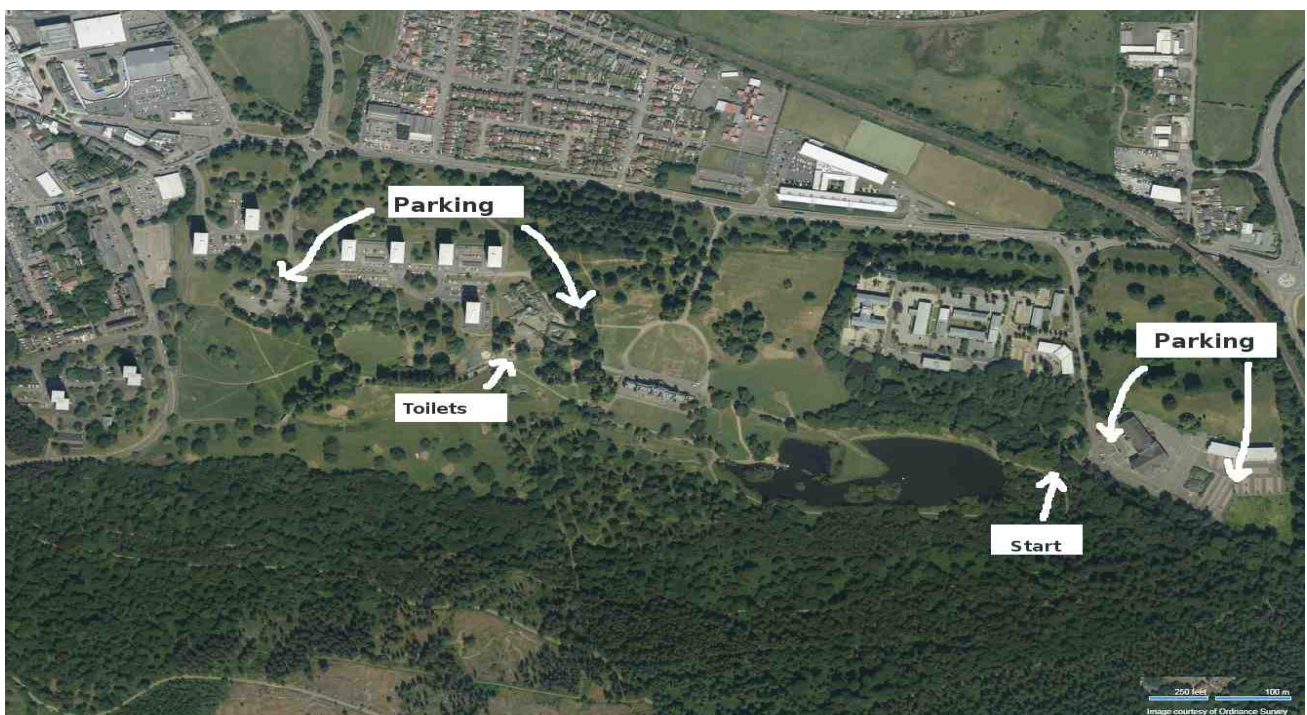
CALLENDAR PARK WEDNESDAY EVENING EVENT #5
26TH MAY 2021
FINAL DETAILS

Important Covid Info:

1. If you're displaying one or more Covid-19 symptoms you must not attend.
2. If you are in Covid-19 quarantine you must not attend.
3. People in higher risk categories as set out by the government should be aware that attending places you at increased risk.
4. The 2-metre rule applies at all times, including at controls, so please move away from controls as soon as you have punched. Please also maintain distancing on the route between parking and Start/Finish.
5. Please keep young children with you at all times.
6. You need to turn up for your starts on time. There is minimal room for rescheduling late starters, and you may have to wait to get an available start slot.
7. Please do not congregate at the start/finish/car park.
8. By taking part you agree to
British Orienteering code of conduct (see
https://www.britishorienteering.org.uk/COVID19_Safe_Orienteering)

Parking:

The event will run from the eastern end of Callendar Park, Falkirk, Grid Ref NS 905 792 / FK1 1XT / <https://what3words.com/buyers.aside.bleat>. There is parking in the office car parks here; please park considerately, bearing in mind that the offices will be closing around the time of the race start. The eastern office appears to be untenanted at present, and it may be easier to get a space here. Alternatively, you could park in the council car parks in the western end of the park, mindful of the fact that these are closed (and locked) at 8pm



Toilets:

There are public toilets in the park, situated around 600m west of the start.

Start/Finish:

These are both very close to the event centre. Please avoid congregating around the start area and aim to arrive at the start no more than 5 minutes before your start time. Please always adhere to the 2m rule while waiting.

Terrain:

Mix of deciduous and coniferous woodlands. Mostly runnable - little vegetation growth for this time of year. There is a block of terrain in the middle of the map (marked as "rough open with undergrowth") which was felled around two years ago, and is currently planted with juvenile trees. This is the only real area of nasty terrain, and the courses have been planned to avoid this.

The area was last used for a regional-level race in late 2019, and the Routegadget for this race can be viewed at <https://routegadget.fvo.org.uk/rg2/#61>

Map:

1:7,500, Contour interval 5m, drawn by Chris Smithard in 2019 and last revised in December 2020.

Control descriptions:

These are printed on the front of the map. There will be no loose descriptions at the event, but you can download your descriptions from this page and print them off yourself.

Timing:

Sportident in Contactless mode (SIAC) but any version of Sportident dibber will work. Note that all dibbers, including SIAC, must be dibbed manually at the Start and the Finish.

Controls:

Please avoid putting your hands on any of the equipment.

Courses:

Yellow 2.2km +30m

Orange 2.6km +65m

Green 4.2km +80m

Courses close:

at 8:00pm. If you are still out on the course at 8pm, please head directly to the finish!

Safety:

There will be other users in the woods, such as dog walkers, runners and cyclists. Please be considerate to other people using the area for recreation, bearing in mind the ongoing distancing rules.

Covid-19 procedures:

A Covid officer will be present at the event, ensuring that we meet the guidelines; please do not be offended if you are asked to move to give someone else space, or move on after you have finished, or downloaded, etc.

About the area:

Callendar Park is the prime parkland in the Falkirk district, and is transected by the 2nd century Antonine Wall, which was built to prevent the Picts from invading the Roman empire. It is dominated by Callendar House, a faux-French chateau, which has played host to many prominent historical figures, including Mary, Queen of Scots, Oliver Cromwell, Bonnie Prince Charlie and Queen Victoria. For 200 years, it was home to the Forbes family, who made their fortune in providing copper for the hulls of naval vessels, and the woodlands contain the family mausoleum.